



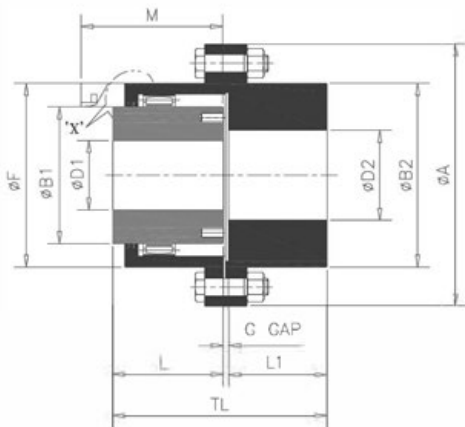
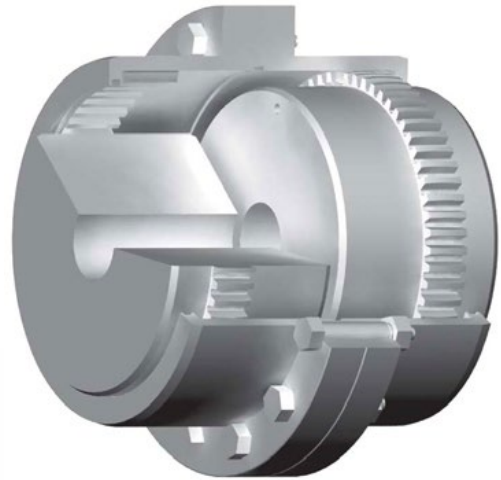
Type RGS - Gear-Flex Couplings

Single Engagement Couplings

Standard Single engagement couplings accommodate angular misalignment and end float without imposing appreciable axial loads on adjacent bearings.

Exposed bolt design allows the use of either open end or socket wrenches which makes it the preferred design for most industrial applications.

Used primarily with floating shaft assemblies to cover longer distance between shaft ends. Please contact us for vertical applications.



DETAIL 'X'

COVER PLATE CONSTRUCTION FOR SIZES RGS-80 ONWARDS.

Size	Coupling Rating		Max. Speed rpm	Min Bore Dia mm		Max Bore Dia mm		Dimensions mm									Solid Hub	
	kW at 100 rpm	Rated Torque Nm		D1 Flex Hub	D2 Rigid Hub	D1 Flex Hub	D2 Rigid Hub	ØA	ØB1	ØB2	ØF	G	L	L1	M	TL	Mass kg	M.I. (WR ²) kg-m ²
RGS-10	14	1337	8000	14	18	52	60	116	69	84	84	4	43	40	51	87	4.5	0.0055
RGS-15	30	2865	6500	22	26	65	80	152	86	107	107	4	50	47	61	101	9.5	0.0204
RGS-20	53	5061	5600	27	30	80	90	178	105	130	127	4	62	59	76	125	15.5	0.0436
RGS-25	105	10027	5000	32	37	98	110	213	131	157	156	5	77	74	92	156	27.5	0.111
RGS-30	168	16043	4400	42	44	115	130	240	152	182	182	5	91	88	106	184	41.5	0.210
RGS-35	231	22059	3900	47	52	135	150	279	178	212	212	6	107	102	130	215	67	0.477
RGS-40	336	32086	3600	47	52	160	180	318	210	250	250	8	121	116	145	245	100	0.92
RGS-45	472	45073	3200	52	57	180	200	346	235	276	275	8	135	131	165	274	135	1.468
RGS-50	650	62070	2900	72	77	195	220	389	254	309	309	9	153	148	183	310	195	2.73
RGS-55	880	84034	2650	72	77	215	240	425	279	334	334	9	168	173	203	350	261	4.20
RGS-60	1205	115069	2450	77	82	235	260	457	305	366	366	10	188	186	228	384	316	5.70
RGS-70	1823	174084	2150	92	102	280	300	527	356	425	425	13	221	218	266	452	500	12.05
RGS-80	2639	252006	1750	95	105	285	335	590	385	470	485	13	249	249	300	511	715	21.77
RGS-90	3037	290012	1550	100	170	300	370	660	420	518	535	15	276	276	325	567	969	36.60
RGS-100	4100	391521	1450	120	180	330	405	711	470	572	595	16	305	305	355	626	1259	56.27

- The outer dimensions of flanges are rounded up to nearest figure in above tables.
- To attend the max. Speed specified above Dynamic balancing is required please enquire.
- Max. bore for coupling with or equivalent to DIN 6885 keys.
- Min. bore is stock bore, to which the couplings are manufactured.
- For vertical installation, higher sizes & spacer type couplings please enquire.
- Size 80 onwards sleeve are with bolted end cover.
- For Max Bore with Square Key please enquire.
- Max. bores specified above are for uniformly loaded drives only with single rectangular keyway.

Website www.ptigroup.co.uk

PTI – the power behind you

Taper Grid Couplings | Original Resilient Couplings | Gear Couplings | Pin and Bush | Elastomeric Disc Couplings | Carbon Fibre Couplings | Torque Control | Fluid Couplings